

HIE: AN ESSENTIAL BUILDING BLOCK FOR IMPROVING CALIFORNIANS' HEALTH AND HEALTH CARE

Diana S. Dooley

Secretary

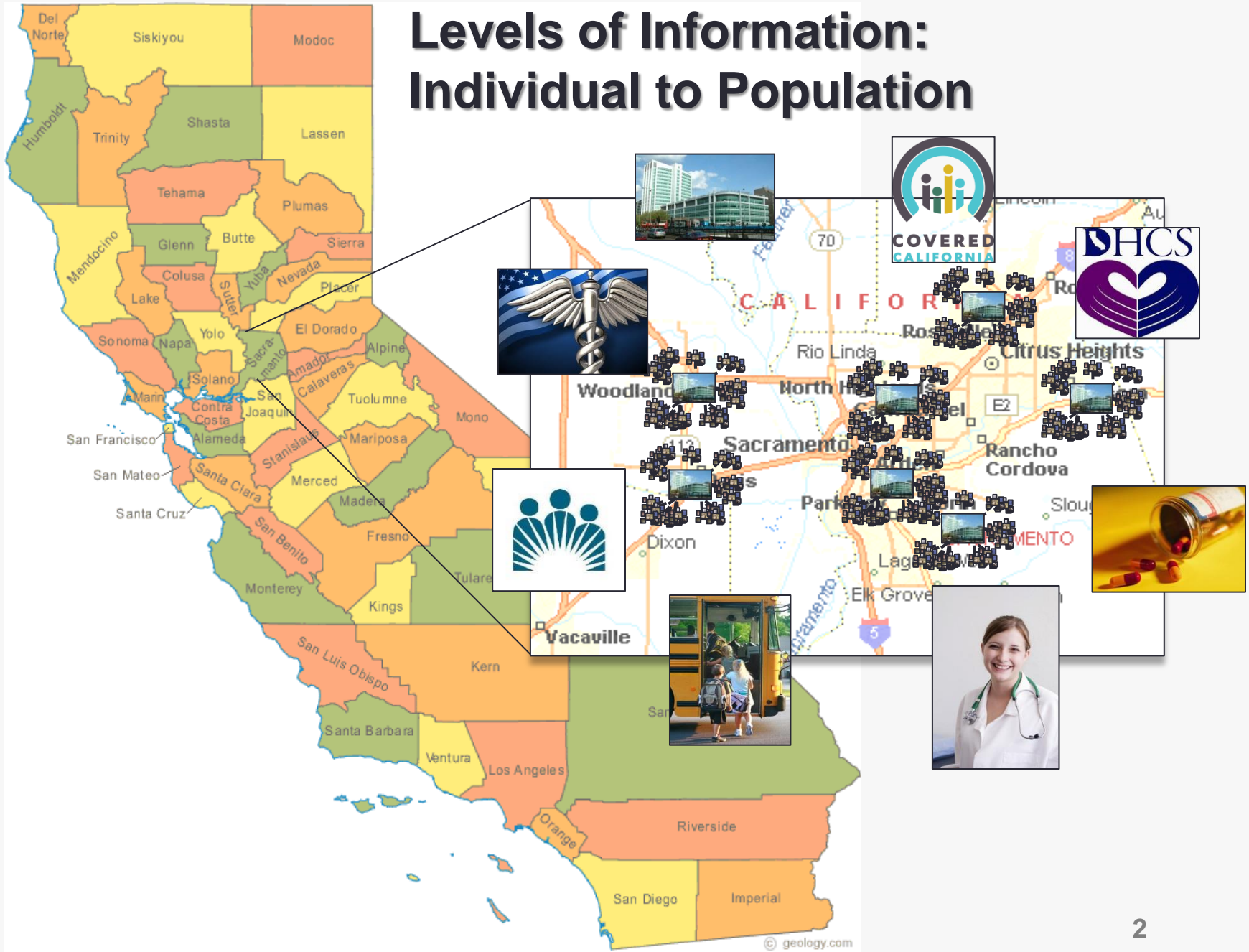
California Health and Human Services Agency

Patricia E. Powers

Innovation Director

California State Innovation Model (CalSIM)


Levels of Information: Individual to Population



California State Innovation Model (CalSIM)

California will be home to the highest quality and most efficient health care system in the country.

The Triple Aim

Better Health · Better Health Care · Lower Costs 

Goals

Reward Value and Innovation · Improve Quality of Care ·
Promote Care Coordination · Create Transparency ·
Foster Competition

Target

By 2022: California's Annual Growth Rate (CAGR) for health expenditures to be in line with the rate of growth in GDP¹
By 2016: To be determined

Framework

Measuring Cost, Quality, and Health

		Costs		Quality	Population Health
		Geography	Top 20 Episodes	NQF Quality Metrics	LGHC Dashboard
Commercial	HMO				
	Non-HMO				
Medi-Cal	Managed Care				
	Non-Managed Care				
Medicare	Medicare Advantage				
	Non-Managed Care				

Reform Strategies: A Call to Action

	Transformational Strategies † Payment Reform ‡ Private Sector § Public Policy	Incentives
High Risk Population / End of Life		←
Medium Risk Population		←
Low Risk Population		←

Building Blocks:



¹ Let's Get Healthy California Report, 2012, www.chhs.ca.gov

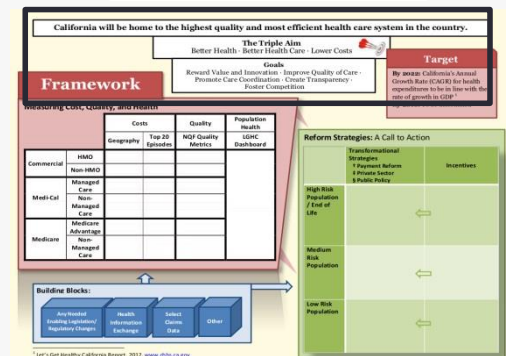
California State Innovation Model (CalSIM) Vision Statement and Goals

California will be home to the highest quality and most efficient health care system in the country.

The Triple Aim
Better Health · Better Health Care · Lower Costs



Goals
Reward Value and Innovation · Improve Quality of Care ·
Promote Care Coordination · Create Transparency ·
Foster Competition

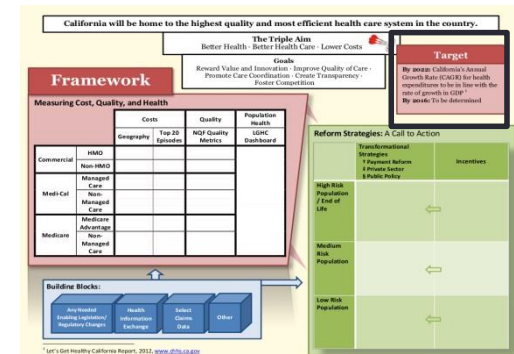


*Let's Get Healthy California Report, 2012, www.lgha.ca.gov

CalSIM Target

Target

By 2022: California's Annual Growth Rate (CAGR) for health expenditures to be in line with the rate of growth in GDP ¹
By 2016: To be determined



CalSIM Framework

Framework

Measuring Cost, Quality, and Health

		Costs		Quality	Population Health
		Geography	Top 20 Episodes	NQF Quality Metrics	LGHC Dashboard
Commercial	HMO				
	Non-HMO				
Medi-Cal	Managed Care				
	Non-Managed Care				
Medicare	Medicare Advantage				
	Non-Managed Care				

California will be home to the highest quality and most efficient health care system in the country.

The Triple Aim
Better Health - Better Health Care - Lower Costs

Improve Quality of Care - Promote Care Coordination, Patient Transparency, Patient Choice

Target
By 2020, California's Annual Growth Rate (AGR) for health expenditures will be in line with the rate of growth in GDP.
By 2020, to be determined.

Reform Strategies: A Call to Action

Transformational Strategies:
- Payment Reform
- Private Equity & Public Policy
- Incentives

High Risk Population / End of Life
Medium Risk Population
Low Risk Population

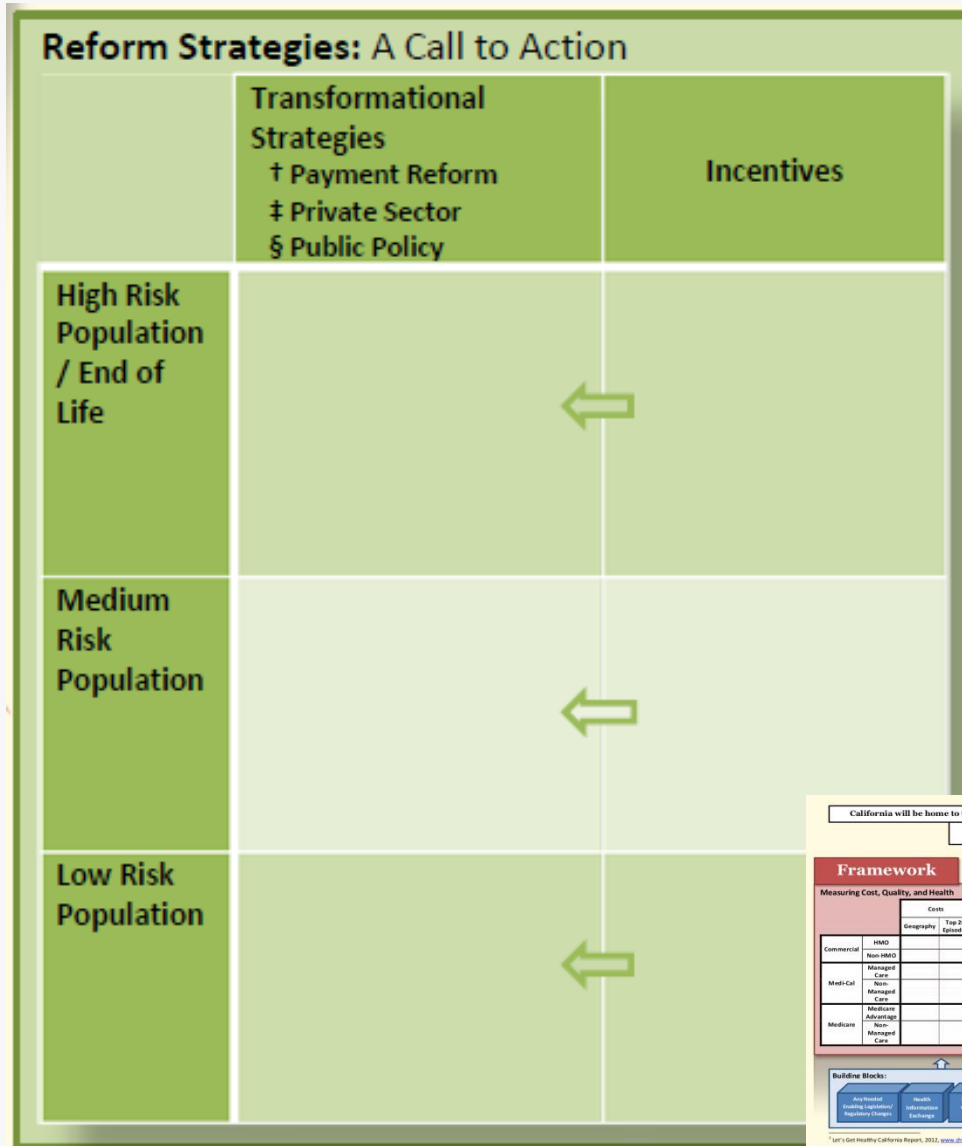
Framework
Measuring Cost, Quality, and Health

		Costs		Quality	Population Health
		Geography	Top 20 Episodes	NQF Quality Metrics	LGHC Dashboard
Commercial	HMO				
	Non-HMO				
Medi-Cal	Managed Care				
	Non-Managed Care				
Medicare	Medicare Advantage				
	Non-Managed Care				

Build-out Blocks:
- Analytical / Modeling / Operations / Design
- Health Information Exchange
- Select / Connect / Data
- Other

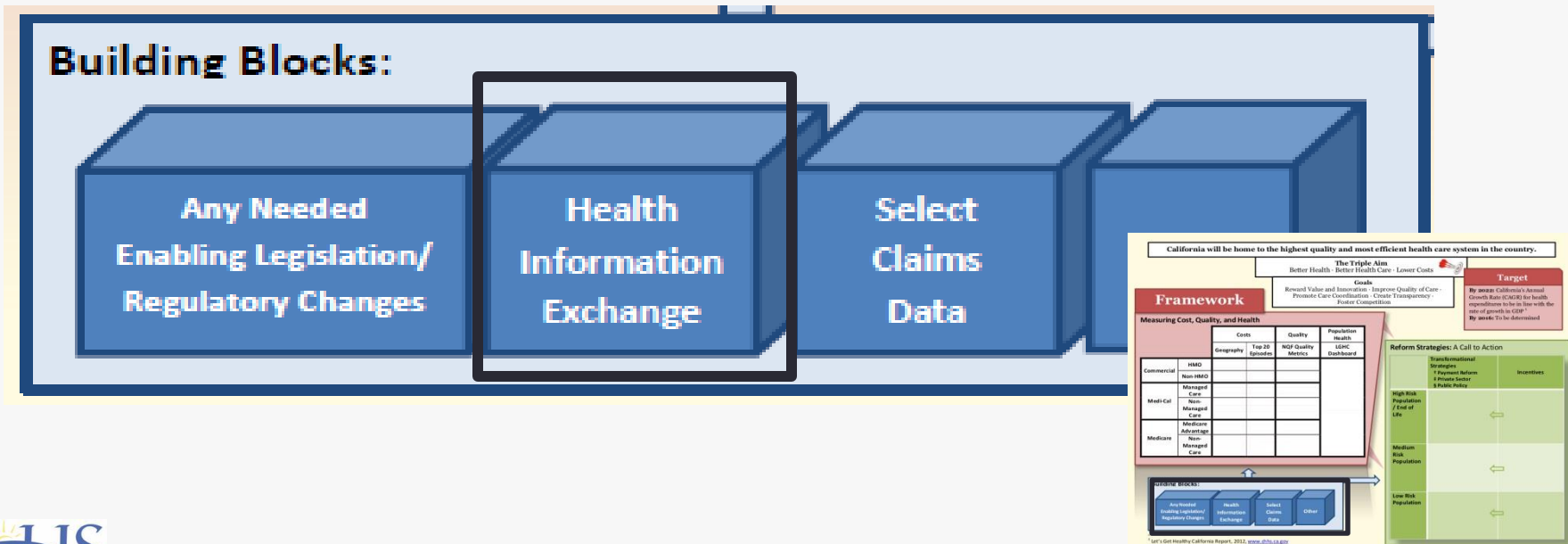
Let's Get Healthy California Report, 2012, www.ahca.ca.gov

CalSIM Reform Strategies



CaSIM Building Blocks

- Enhance individual and population health outcomes through results-oriented programs.
- Ensure secure data access that protects patient privacy and data integrity.
- Engage patients and families as partners in care



Let's Get Healthy California Framework

The Triple Aim:

Better Health • Better Care • Lower Costs



Health Equity: Eliminating Disparities





Goal #1: Healthy Beginnings



1. Healthy Beginnings

Laying the Foundation for a Healthy Life

Priority	Indicator
↓ Infant deaths	1. Mortality rates
↑ Vaccinations	2. Doses of vaccines for children 19-35 months
↓ Childhood trauma	3. Adverse Childhood Experiences score 4. Nonfatal child maltreatment incidents
↑ Early Learning	5. Proportion of 3 rd graders who read at or above proficiency level <i>Indicator Development Needed: School Readiness</i>
↓ Childhood asthma	6. Emergency Department visit rates for asthma
↑ Childhood fitness and healthy diets	7. Physical fitness assessments of children 8. Adolescents who meet physical activity guidelines 9. Soda and sugary sweetened beverage consumption 10. Fruit and vegetable consumption
↓ Childhood obesity and diabetes	11. Obesity rates for children and adolescents <i>Indicator Development Needed: Diabetes rates for adolescents</i>
↓ Adolescent tobacco use	12. Smoking rates
↑ Mental health and well-being	13. Frequency of feeling sad within last 12 months



**Goal #2:
Living Well**

2. Living Well

Preventing and Managing Chronic Disease

Priority	Indicator
↑ Health status	14. Self-reported health status as good, very good or excellent
↑ Fitness and healthy diets	15. Adults who meet physical activity guidelines 16. Sugary sweetened beverage consumption 17. Fruit and vegetable consumption
↓ Tobacco use	18. Smoking rates
↑ Controlled high blood pressure and high cholesterol	19. Percent of adults with hypertension who have controlled high blood pressure 20. Percent of adults with high cholesterol who are managing the condition
↓ Obesity and diabetes	21. Obesity rates 22. Diabetes prevalence
↑ Mental health and well-being	23. Proportion of adults and adolescents with a major depressive episode <i>Indicator Development Needed: Effective treatment of depression</i>

Goal #3: End-of-Life



3. End-of-Life

Maintaining Health, Dignity and Independence

Priority	Indicator
<p>↓ Hospitalization during the end of life</p>	<p>24. Percent of decedents admitted to (Intensive Care Unit/Critical Care Unit) ICU/CCU during the hospitalization in which death occurred</p>
<p>↑ Palliative care and hospice care</p>	<p>25. Proportion of acute care hospitals that provide specialty palliative care 26. Enrollment in hospice care prior to death</p>
<p>↑ Advance care planning</p>	<p><i>Indicator Development Needed: Advance care planning.</i></p>

Goal #4: Redesigning the Health System



4. Redesigning the Health System Efficient, Safe and Patient-Centered Care

Priority	Indicator
↑ Access to primary and specialty care	27. Percent of patients receiving care in a timely manner <i>Indicator Development Needed: Percent of patients who had difficulty finding a provider</i>
↑ Culturally and linguistically appropriate services	<i>Indicator Development Needed: Linguistic and cultural engagement</i>
↑ Coordinated outpatient care	28. Percent of patients whose doctor's office helps coordinate their care 29. Preventable hospitalizations
↑ Hospital safety and quality of care	30. 30-day all-cause unplanned readmissions 31. Incidence of hospital acquired infections
↓ Sepsis	<i>Indicator Development Needed: Sepsis related mortality</i>

Goal #5:

Creating Healthy Communities



5. Creating Healthy Communities

Enabling Healthy Living

Priority	Indicator
↑Healthy food outlets	32. Retail Food Environment Index
↑Walking and biking	33. Annual number of walk trips per capita 34. Percentage of children walk/bike to school
↑ Safe communities	35. Perception of neighborhood safety

Health in All Policies

Goal #6:

Lowering the Costs of Care

INSURANCE

6. Lowering the Costs of Care

Making Coverage Affordable and Aligning Financing to Health Outcomes

Priority	Indicator
↓ People without insurance	36. Uninsurance rate
↑ Affordable care and coverage	37. Health care cost as percent of median household income
↓ Rate of growth in health spending in California	38. Compound annual growth rate
↑ People receiving care in an integrated system	39. Percent of people in managed health plans
↑ Transparent information on cost and quality of care	<i>Indicator Development Needed: Transparent information on cost and quality</i>
↑ Payment policies that reward value	<i>Indicator Development Needed: Most care is supported by payments that reward value</i>

Questions

More information is available at:

- Let's Get Healthy California

<http://www.chhs.ca.gov/Pages/HealthCalTaskforce.aspx>

- Payment Reform Innovation

<http://www.chhs.ca.gov/Pages/PayRefInnovat.aspx>