



# Building it Together: A Safe and Healthy California for All



**Master Plan for Aging**  
*Research Subcommittee*  
*Meeting on 10.24.2019*

# What is Let's Get Healthy California?

As California's state health assessment and improvement plan, LGHC provides an ongoing statewide collaborative and systematic approach to:

Assess and  
Monitor Health

Identify and  
Prioritize  
Opportunities

Collectively  
Plan and Act

Evaluate and  
Report  
Progress

# Two Core Components



**Data**

A Shared  
Framework for  
Advancing Health

**People**

An Ongoing  
Statewide  
Collaborative

# A Shared Framework for Advancing Health

Focus on achieving **Better Health, Better Care, and Lower Costs** and promoting **Health Equity** for all Californians.



Healthy Beginnings



Living Well



End Of Life



Redesigning the Health System

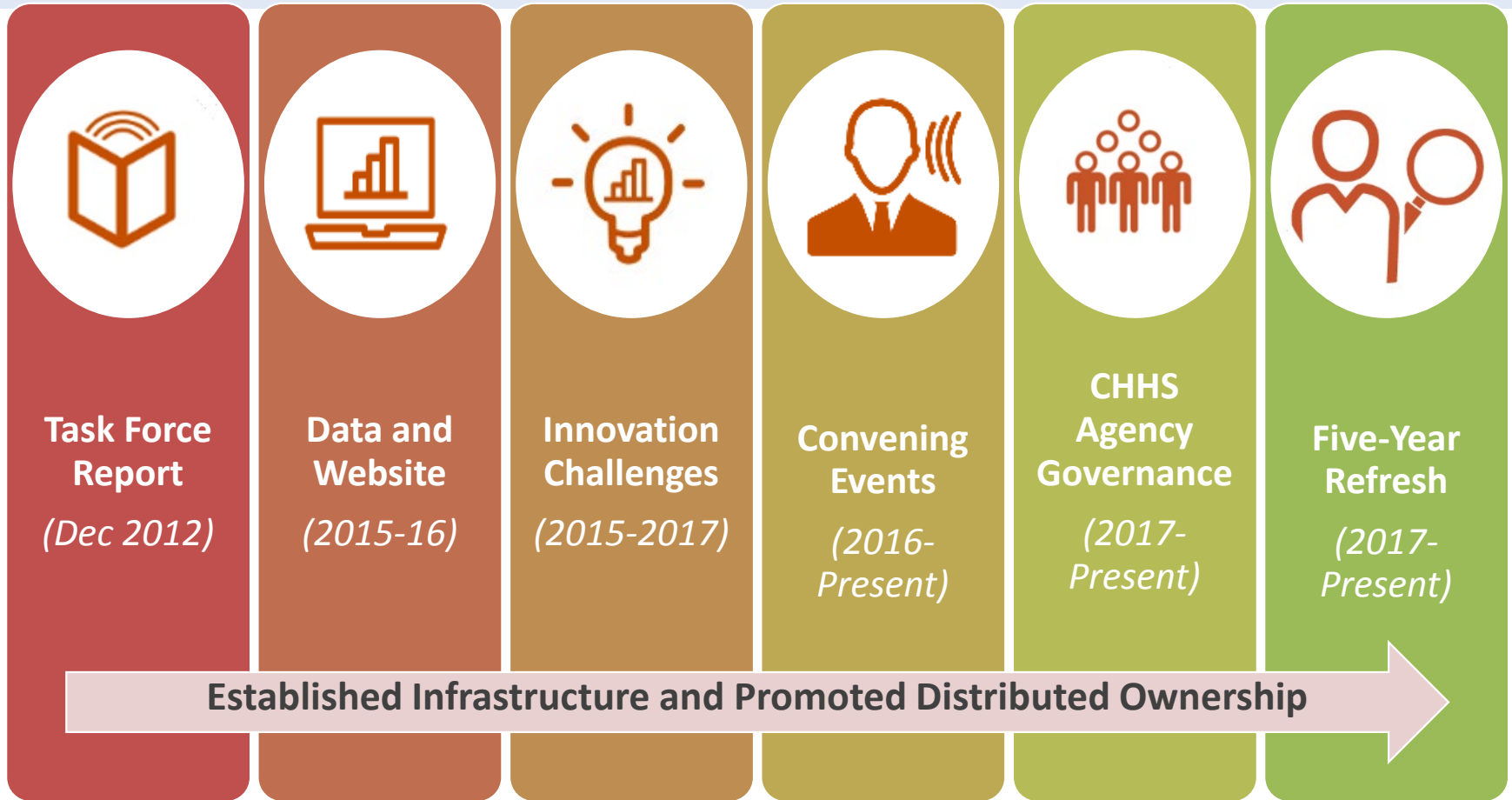


Creating Healthy Communities

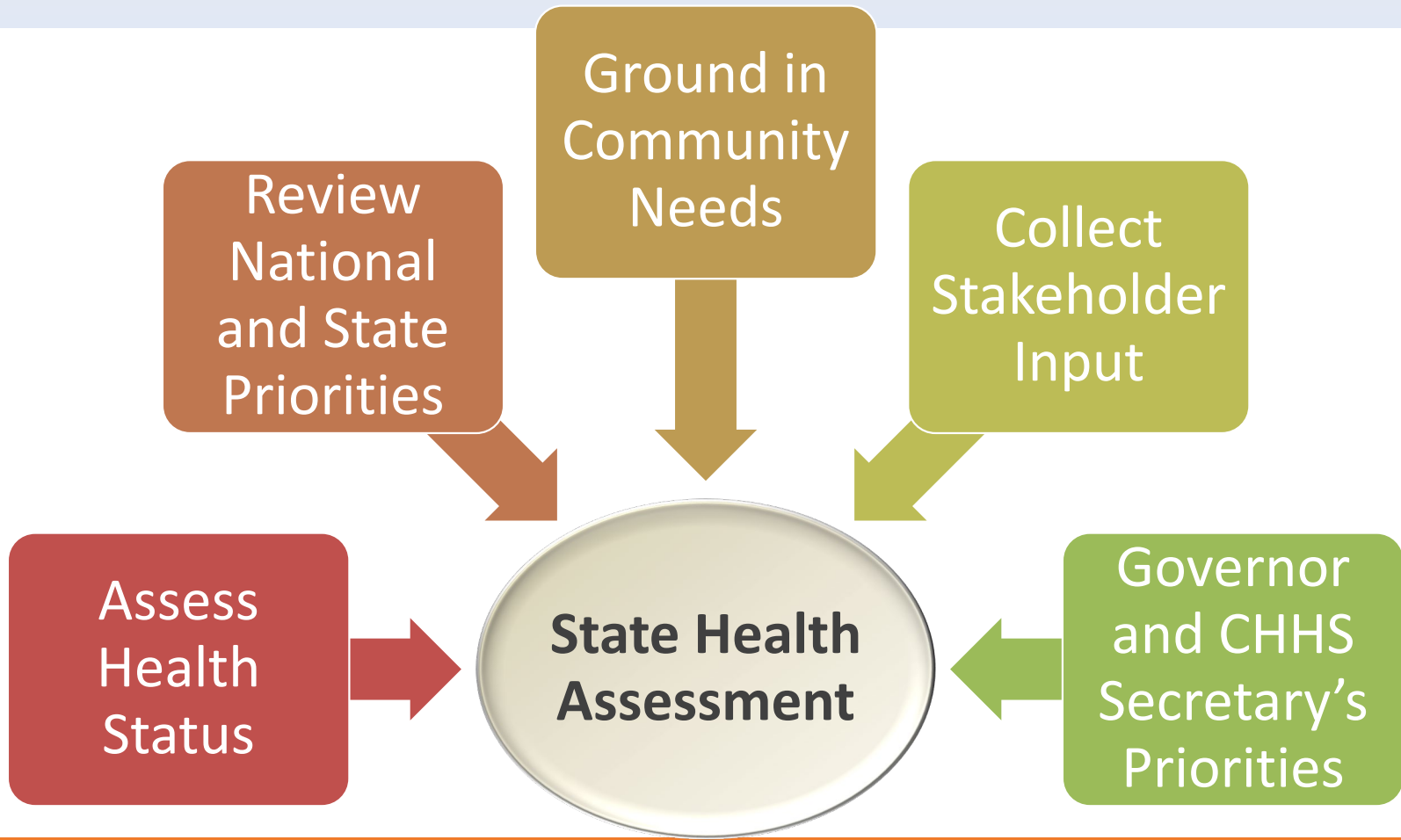


Lowering the Cost of Care

# At-a-Glance Timeline



# Updating the LGHC Priorities



# Refresh Outcomes

Enhancements to the LGHC framework include a stronger emphasis on:

- Significant Life Stages
- Mental and Behavioral Health
- Social Determinants of Health

# Alignment with the Draft Master Plan for Aging Framework

## ■ Age-Friendly Community

- LGHC Topics: housing, transportation, community cohesion, etc.

## ■ Good Health as I Age

- LGHC Topics: physical activity, obesity, diabetes, tobacco use, overall health status, senior health index score, falls, depression, insurance, primary care shortage area, etc.

## ■ Financially Secure and Safe

- LGHC Topics: poverty, employment, neighborhood safety, etc.





# SUCCESSSES AND LESSONS LEARNED

# Get clarity on the 'Why'

- The long term purpose and intent should inform the selection of indicators and criteria for data sources.
- 10 years is too long, it's also too short!
  - Data availability changes over time
  - Community needs and priorities rapidly change
  - Need for both performance measures for accountability and population outcomes to show impact

# Invest time in establishing infrastructure and promoting distributed ownership

- LGHC is based on a participatory model – our success is dependent on strong partnership.
- A strong infrastructure is key:
  - Data sharing agreements, partnerships, roles
  - Data collection and curation process
  - Dataset collection and metadata templates
  - Standards for target-setting, measuring progress, disparities, presentation, etc.

# Questions and Discussion

